



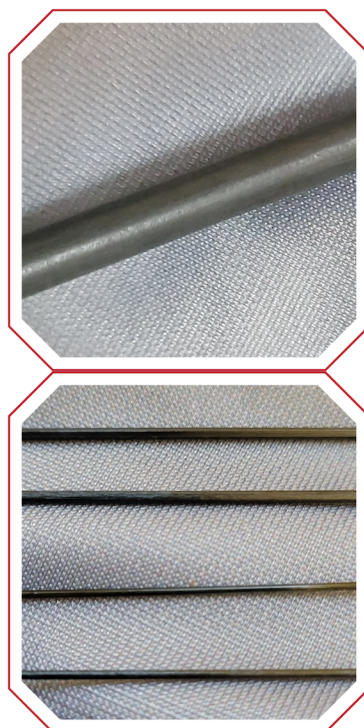
Concordia

F I B E R S



THERMOPLASTIC TOWPREG

CONCORDIA ENGINEERED FIBERS PRODUCES
CONTINUOUS FILAMENT COMMINGLED ROVINGS
FOR THERMOPLASTIC PULTRUDED PARTS



Concordia's thermoplastic continuous tow can be used as a direct input material for pultruded rods, tubes, shapes, and 3D printing filament.

WIDE RANGE OF REINFORCING & THERMOPLASTIC INPUTS

PEEK, PEI, PPS, PC, PP, PA6, PA11, PA12, PET, PETG, LMPEAK
REINFORCED WITH CARBON, GLASS & ARAMID



- CUSTOMIZABLE FIBER VOLUME FRACTIONS
- TWISTED AND UNTWISTED FORMATS
- ENGINEERED SIZING CHEMISTRIES
- MULTI-MATERIAL BLENDS

100 YEARS OF EXPERIENCE WITH PRODUCTION
FACILITIES IN USA, FRANCE, AND MEXICO